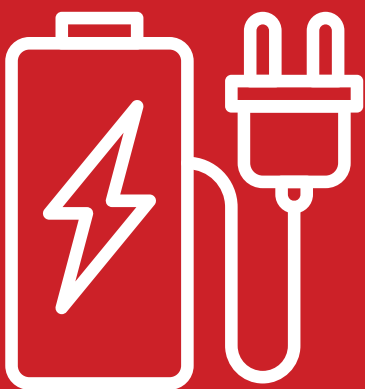


4 ways to care for your leisure battery

Charge after every use



If the battery is deeply discharged (e.g. a day has been spent using the application away from electric hook-up or a motor mover has been used), some chargers fitted to motorhomes and caravans are not powerful enough to fully recharge a battery. Either plug your motorhome/caravan in at home or take your battery off the application for a full recharge.

A full charge usually takes 24-48 hours.

Your charger should be 10-15% capacity of the battery (e.g. if your battery is 100Ah your charger should be 10-15Ah).

Correct charge time and charger



Unplug and store correctly when not in use

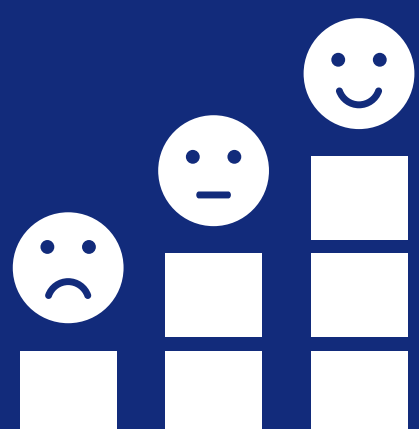


If your motorhome or caravan is going to be stored for an extended period of time (i.e. over the winter months), you must disconnect your battery and charge it fully once a month, as batteries naturally self-discharge.

You can check the voltage of the battery with a hand-held multimeter.

- 12.6 – 12.8V is 100% charged.
- 12.35V – 12.6V is an acceptable charge level.
- Lower than 12.35V – Seriously discharged battery. Urgent recharge required.

Check charge levels



MONBAT[®]
BATTERIES

Who are Monbat Batteries?

Made in Europe



Monbat Group is a fast-growing company that manufactures lead-acid batteries. Monbat operates seven plants, with two factories for lead-acid batteries located in Bulgaria.

That's how long Monbat has been present on the international market. State-of-the-art equipment and machines using the latest technologies, produce the highest-quality batteries possible. Selling over 4 million batteries per year.

More than 60 years in the market



Monbat has four recycling plants for lead-acid batteries, located across four European countries.

The plants can recycle a total capacity of 158,000 tonnes of used lead-acid batteries per annum.

Recycled industrial materials



Undercharge: A flat battery leads to the crystallisation of sulphur on the lead plates, this is irreversible damage that is not covered under warranty.

Incorrect battery fitted: Fitting the wrong battery will result in poor performance and will prematurely kill the battery through no fault of the manufacturer.

Your warranty whats not covered



MONBAT[®]
BATTERIES